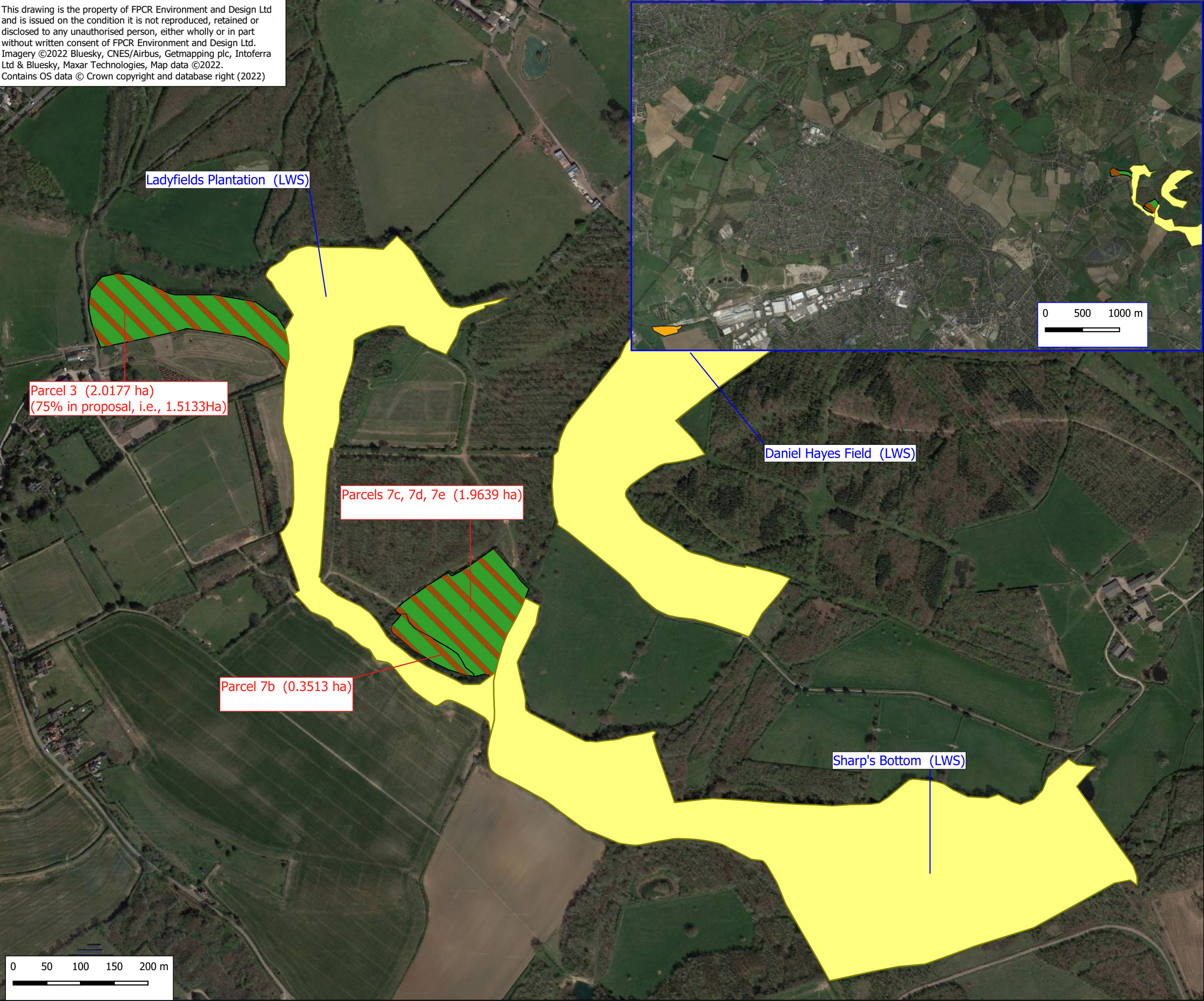




This drawing is the property of FPCR Environment and Design Ltd and is issued on the condition it is not reproduced, retained or disclosed to any unauthorised person, either wholly or in part without written consent of FPCR Environment and Design Ltd. Imagery ©2022 Bluesky, CNES/Airbus, Getmapping plc, Intoferra Ltd & Bluesky, Maxar Technologies, Map data ©2022. Contains OS data © Crown copyright and database right (2022)




Key


 Swadlincote Resource Recovery Park (SRRP)

 Local Wildlife Site (LWS)

PROPOSED HABITATS

 Wet Woodland

-	29.09.22	Initial copy	NJL/NJL
rev	date	comment	dmr/chk



client
R&P Clean Power Limited

project
Swadlincote Resource Recovery Park (SRRP)

drawing title
Land at Manor Farm - Biodiversity Offsetting Proposal Land Parcels



drawing / figure number	Date printed
7233-ES-8.11-01	29/9/2022